

Remote Access - A guide for Students & Parents / Carers



www.staug.org.uk

Telephone: 01744 678112

Email: staugustine@staug.org.uk

Facebook: [@St-Augustine-of-Canterbury-Catholic-High-School](https://www.facebook.com/St-Augustine-of-Canterbury-Catholic-High-School)

St Augustine of Canterbury Catholic High School

Contents

This document has been created to help with the issues that students and their parents / carers have highlighted over the time of remote schooling.

This document outlines how to access the school system, the password system in school as well as the various learning platforms and apps used within school.

Contents

- School network username and passwords
- School email system
- Edulink One
- Remote Desktop Connection
- Locating files & folders on the school network (S & H Drive)
- Websites for homework - Maths, Science, PE
- Useful revision websites
- Useful websites for Pastoral Care

Username & Passwords

The school system requires all students to have their own unique username and a password to access anything on the St Augustine school network.

Username

Every student has their own unique username for the school network. Students usernames are:

For Years 7 & 8 (2020-21): Their surname, followed by their first letter of their first name and the year they joined the school. Eg: A Year 8 student named Joe Bloggs their username would be Bloggsj19

For Years 9, 10 & 11 (2020-21) The first letter of their first name, their surname and the year they joined the school. Eg: A Year 11 student named Joe Bloggs their username would be JBloggs16.

Password

At St Augustine's all users have to have a complex password which is changed every 60 days. The password needs to follow some simple rules.

- Contain a minimum of 8 characters
- Contain a capital letter
- Contain lower case letters
- Contain a number OR a special character (for example . ! ? *)
- Cannot contain your first or surname

Example: WA119bb, Boardmans1,

All passwords need to be safe, secure and not shared with anyone else

The password will need to be changed every 60 days and the same password cannot be used again. To change a password hold down the CTRL ALT & DELETE keys and follow the instructions.

E-mail

Every student has their own school email address. The format of the email address is the students username@staugs.org.uk. The password to access the email address is the same as the students network password.

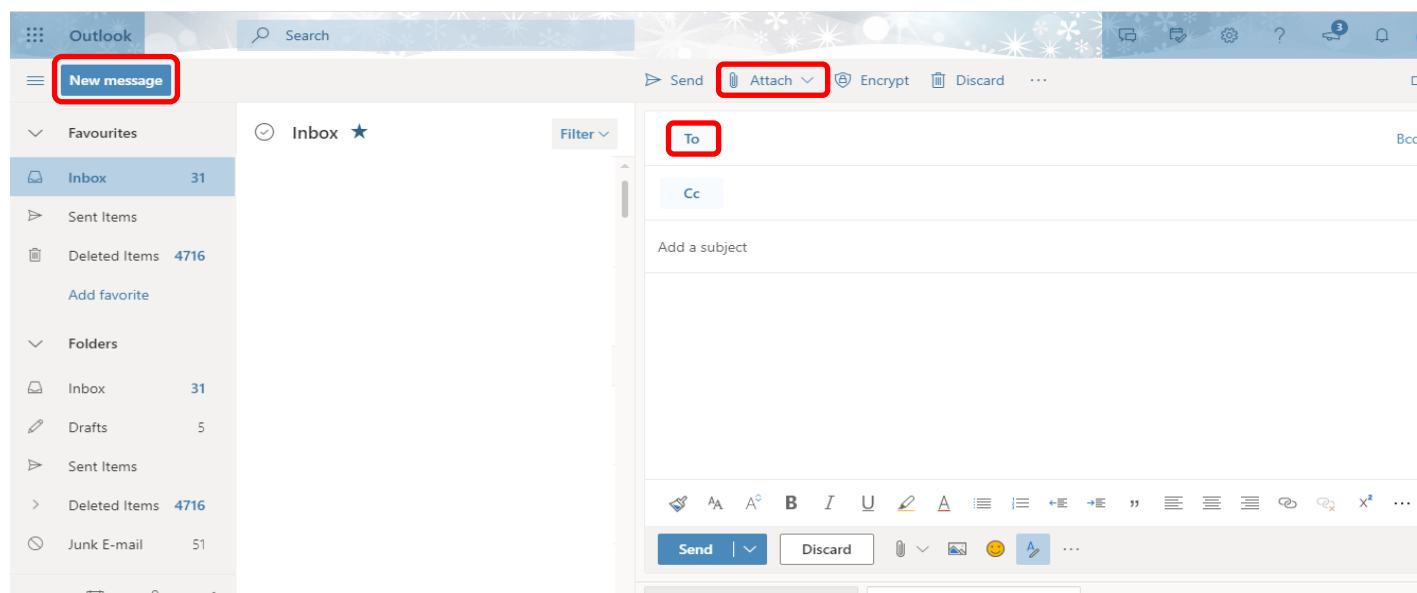
Open the school webpage <https://www.staugs.org.uk/>

Scroll down the page & on the left hand side is a link titled Student Email



Once selected it will prompt you for your email address (username@staugs.org.uk) and password (school network password) Your emails will then open.

Attaching a File



Select New Message > Click on To (find the persons email address you are searching for by typing their name) > Select Attach > Select Browse This Computer (This opens a window with your folders, find the file you want to attach & click on the file once) > Select Open. The attached document should now be displayed under the Subject Field on the email.

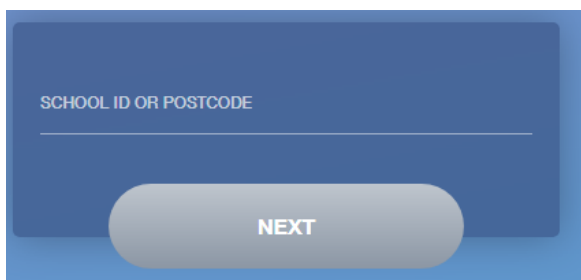
EduLink One

EduLink One is a great communication tool where school can communicate with both students and Parents / Carers.

Parents / Carers: If you don't have a username and password or require it resetting please contact school by phone or email.

Visit <https://www.edulinkone.com/#!/login>

You will need to enter the school postcode WA11 9BB & select Next.



A screenshot of the EduLink One login page. It features a dark blue background with a white input field labeled 'SCHOOL ID OR POSTCODE'. Below the input field is a rounded rectangular button with the text 'NEXT' in white capital letters.

You will then need to enter your username and password. Students this is the same as your school email address followed by your school password. Parents / Carers you have been provided with a username & password.



A screenshot of the EduLink One login page for St. Augustine of Canterbury. At the top, there is a circular logo with a shield and a cross, with the motto 'SPERABO IN EUM' below it. Below the logo, the text 'St. Augustine of Canterbury' is displayed. The main login area has a dark blue background with white text. It includes a 'USERNAME' input field, a 'PASSWORD' input field, a 'REMEMBER ME?' checkbox, and a 'RESET LOGIN' link. At the bottom, there is a rounded rectangular button with the text 'LOG IN' in white capital letters.

There is also a mobile app that can be downloaded from the Apple App Store & Google Play Store. The App is called EduLink One and developed by Overnet Data.

Remote Desktop Connection

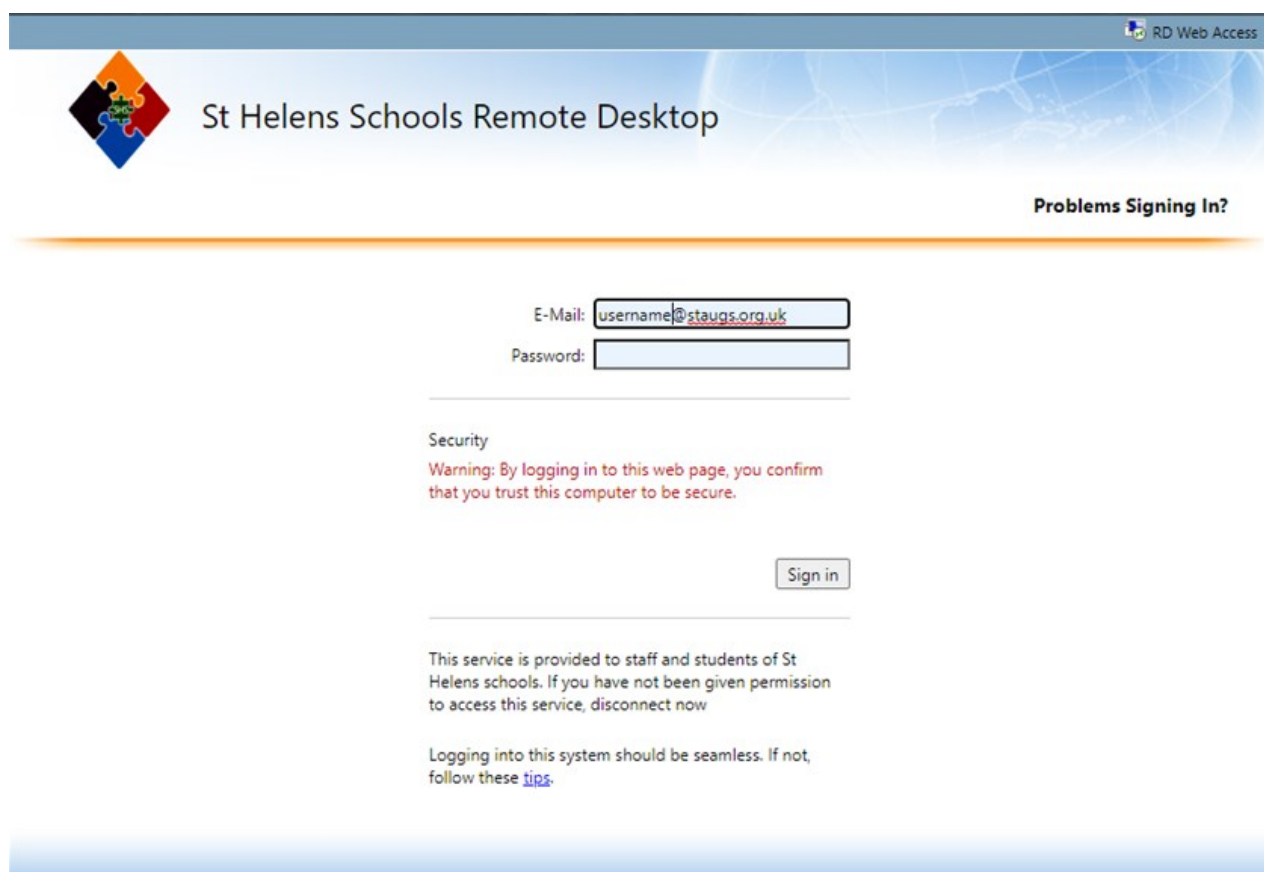
All students have access to all their files and folders via the Remote Desktop Connection which can be accessed via any laptop / desktop PC which has an internet connection.

Open the school webpage <https://www.staug.org.uk/>

Scroll down the page & on the left hand side is a link titled Remote Desktop Connection



Once selected this will open another window & click on Sign In which will then open another page to enter a username (e-mail) and password.



Email = School email which is your username@staug.org.uk

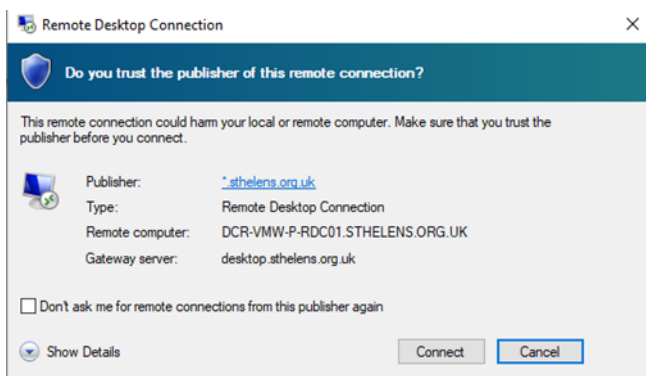
Password = School network password

Remote Desktop Connection

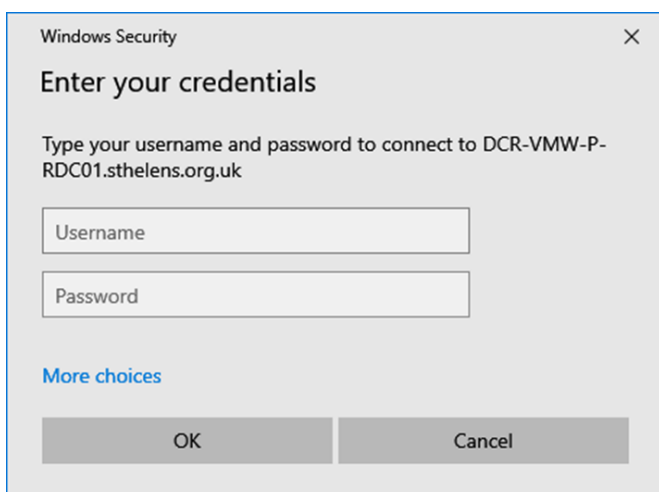
Once the email address and password have been entered select the St Augs Student Desktop icon



After clicking on the icon it will download a file called 'cpub-St_Augs_Student-St_Augs_StudentCmsRdsh.rdp' which you can open from your downloads folder or click open when it prompts.



This will then open a Windows Security window which will ask you to enter your credentials. You will need to enter your school email address and password again.



Once you enter the username and password the schools desktop will open in another window which means you will be able to access all files, folders & applications that you would be able to in school.

Locate & Use the S (Student Share) Drive via Remote Desktop

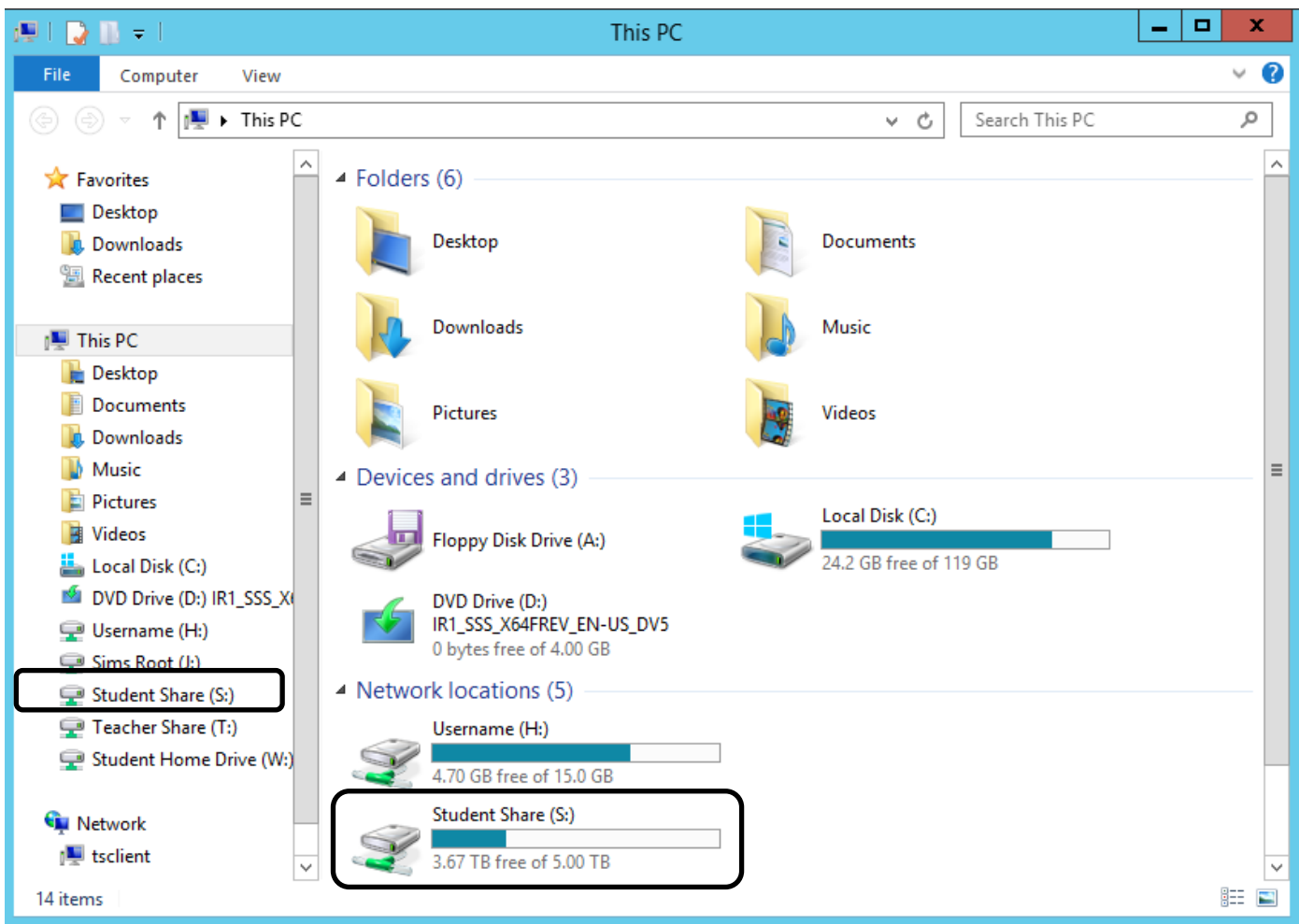
Once you have logged into the school network via the Remote Desktop Connection you can access all the files and folders as if you were in school.

To open the Student Share Drive (S Drive)

Click the Yellow folder icon on the toolbar at the bottom of the screen



This will then open the following window - select the Student Share (S) from either the main window or the list of drives on the left hand side.



Navigate through the folders to select the relevant work / subject. All folders are organised in alphabetical order.

Locate & Use the H (Own Area) Drive via Remote Desktop

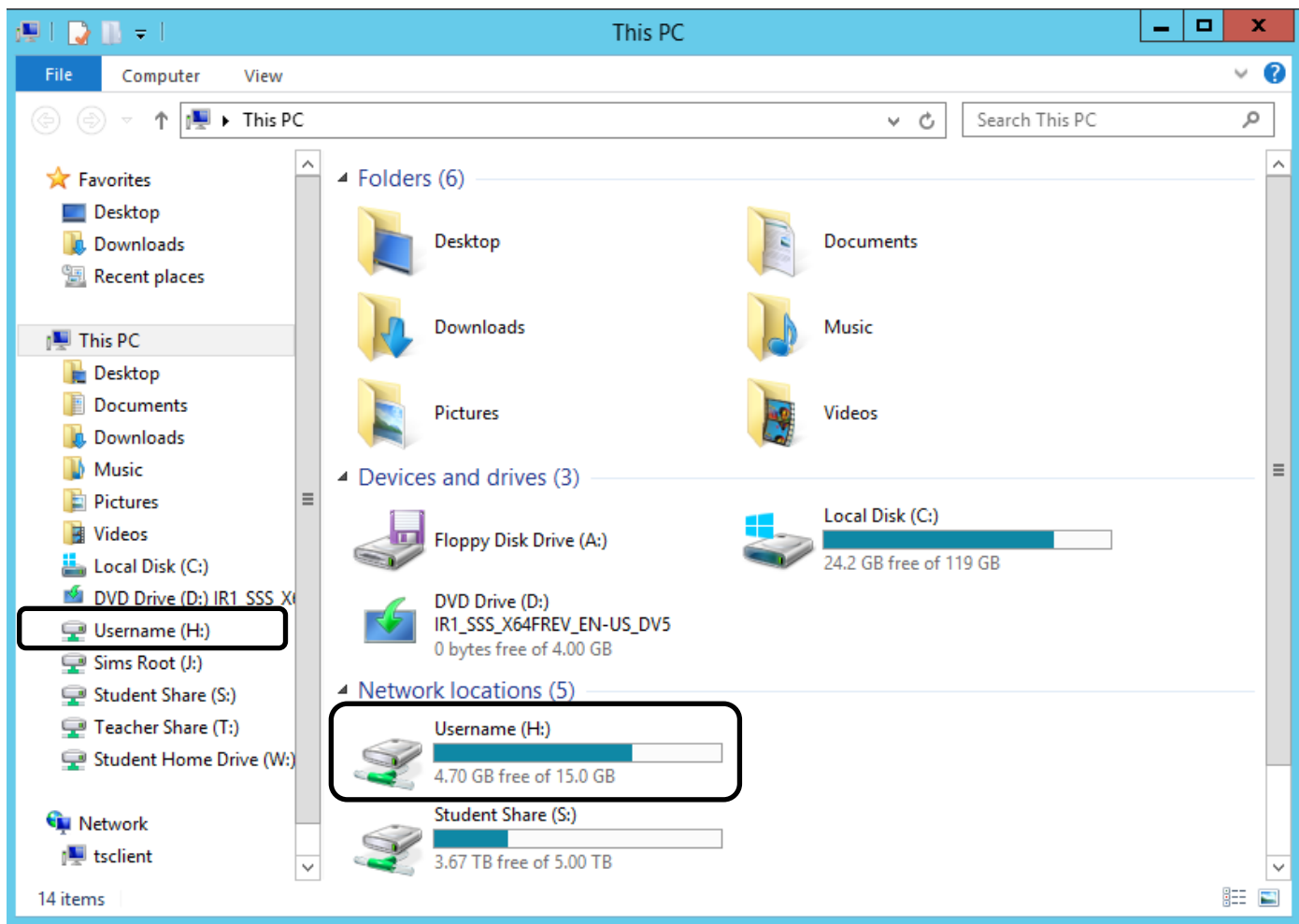
Once you have logged into the school network via the Remote Desktop Connection you can access all the files and folders as if you were in school.

To open Your area (H Drive)

Click the Yellow folder icon on the toolbar at the bottom of the screen



This will then open the following window - select your Username (H) from either the main window or the list of drives on the left hand side.



Navigate through the folders to select the relevant work / subject. All folders are organised in alphabetical order.

Maths

Current (2019-20) Year 7 & 8

Maths work is being set using the website Whiterose Maths. To complete the work students need to watch the videos on the web address www.whiterosemaths.com/homelearning and complete the worksheets on the Student Share (S Drive).

S:\All Student Work\Year 7\Maths\Worksheets for White Rose Lessons

S:\All Student Work\Year 8\Maths\Worksheets for White Rose Lessons

Current (2019-20) Year 9 & 10

Maths work is being set by individual Maths teachers via the website <https://vle.mathswatch.co.uk/vle/>.

Year 10 Usernames: 16 followed by first initial then surname @staugs [eg: 16CSmith@staugs]

Year 9 usernames: 17 followed by the first initial then surname @staugs [eg: 17SLittler@staugs]

All passwords have been set to: **password1**

School still have access to MyMaths if students need an extra resource to help with their understanding.

Visit the website www.mymaths.co.uk, the school login details are: **staugs** and **divide**.

All individual login details are in a document on the S Drive at the following location:

S:\All Student Work\Year 7\Maths


S:\All Student Work\Year 8\Maths

S:\All Student Work\Year 9\Maths

S:\All Student Work\Year 10\Maths

Science

Science work is being set using the website Kerboodle which has some amazing resources that can support your revision and classwork.



Lessons, Resources, Assessment,
and Kerboodle Books

[Contact us about trying Kerboodle](#)

Username/Email

Password

Institution Code

Log in

[Trouble logging in?](#)

The web address is <https://www.kerboodle.com/users/login>

Username: Students school username (eg jpollard19)

Password: Students school username (eg jpollard19) unless this has been reset by the student.

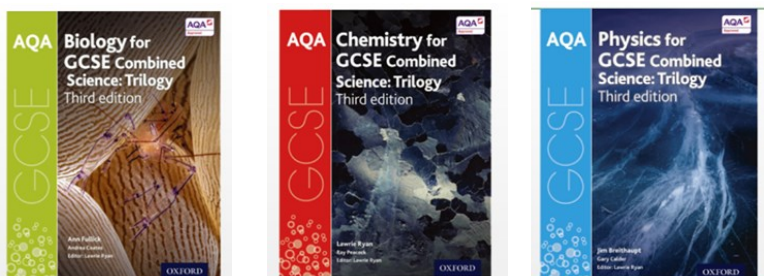
Institution Code: nl1 (November, lima 1)

Within Kerboodle there are textbooks for you to access and read. As well as an assessment area to enable you to check your progress.

Key Stage 3 Current (2019-20) Years 7 & 8 - AQA Activate Books 1 & 2



GCSE Current (2019-20) Years 9 & 10 - AQA Science Trilogy textbook



Science

Seneca Learning (Key Stage 3 & GCSE)

Seneca Learning is a great online revision tool. You can access both Key Stage 3 Science and AQA Combined Science teaching and questions at both Higher and Foundation level. Lots of practice questions here to help your knowledge grow.

Key Stage 3: <https://app.senecalearning.com/courses?Price=Free&Age+Group=KS3&Subject=Science>

GCSE Trilogy: <https://app.senecalearning.com/courses?Price=Free&Age+Group=GCSE&Subject=Combined+Science&Exam+Board=AQA>

BBC Bitesize (Key Stage 3 & GCSE)

This resource is really useful and you can work your way through each unit in Key Stage 3 and in AQA Combined Science (trilogy) with teaching, videos and questions to test you.

Key Stage 3 Link: <https://www.bbc.co.uk/bitesize/subjects/zng4d2p>

GCSE Trilogy Link: <https://www.bbc.co.uk/bitesize/examspecs/z8r997h>

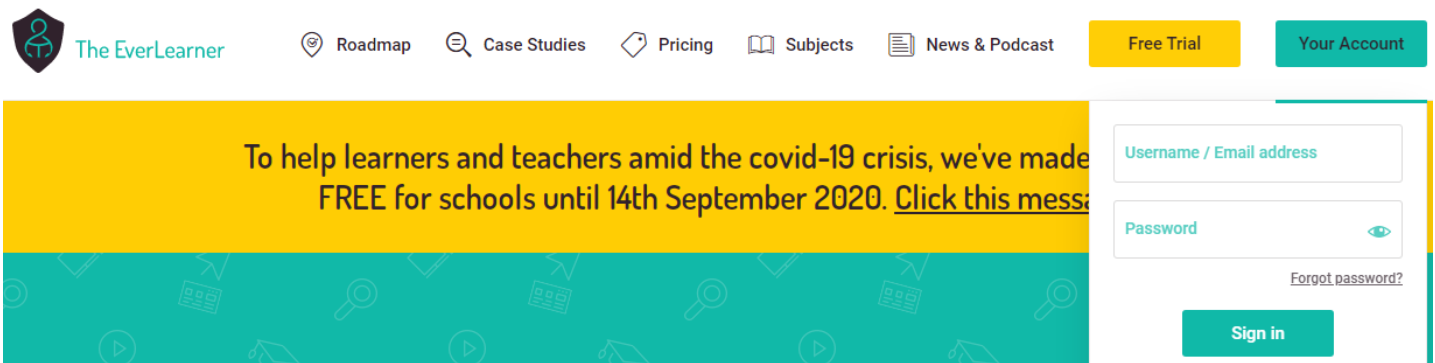
Primrose Kitten (Aimed at GCSE Students)

This is an excellent resource if you like watching short Video clips on YouTube as each unit is covered in around 10 minutes as well as quick fire questions. The Primrose Kitten Revision Guide is available through the website and has links to all her YouTube clips.

You can access the Primrose Kitten Revision Guide through: <https://mailchi.mp/161c4e43b8bf/primrosekitten> (Remember that we are AQA Combined Science Trilogy)

Cambridge Nationals PE

For students doing Cambridge Nationals PE homework is set via the website Everlearner.



Open the website <https://theeverlearner.com/> and click on 'My Account' in the top right corner

Username is your school email address (username@staugs.org.uk)

Password: This was sent to students email addresses March. Students who need a reset of their password would have to see Mr Holdsworth / contact him via the EduLink One App.

Once logged in access the assignments and follow the instructions on screen that have been set by the PE department.

Useful Websites & Resources (Subject Specific)

All Subject Areas

<https://app.senecalearning.com/sign-up>

<https://worldbook.kitaboo.com/reader/worldbook/index.html...>

English

https://www.gutenberg.org/wiki/Main_Page

<https://www.literacyshed.com/home.html> (Key Stage 3)

<https://www.educationquizzes.com/ks3/english/> (Key Stage 3 & GCSE)

<https://www.youtube.com/user/mrbruff> (GCSE)

<https://www.litcharts.com/> (GCSE)

Maths

www.whiterosemaths.com/homelearning

<https://vle.mathswatch.co.uk/vle/>

<https://www.mymaths.co.uk/>

<https://corbettmaths.com/>

<https://justmaths.co.uk/>

<http://www.mrbartonmaths.com/index.html>

<https://www.10ticks.co.uk/>

Science

<https://www.kerboodle.com/users/login>

<https://app.senecalearning.com/courses?Price=Free&Age+Group=KS3&Subject=Science>

<https://app.senecalearning.com/courses?>

[Price=Free&Age+Group=GCSE&Subject=Combined+Science&Exam+Board=AQA](https://app.senecalearning.com/courses?Price=Free&Age+Group=GCSE&Subject=Combined+Science&Exam+Board=AQA)

<https://www.bbc.co.uk/bitesize/subjects/zng4d2p>

<https://www.bbc.co.uk/bitesize/examspecs/z8r997h>

<https://www.freesciencelessons.co.uk/>

Geography

<https://www.aqa.org.uk/subjects/geography>

<https://www.bbc.co.uk/bitesize/examspecs/zy3ptyc>

Useful Websites & Resources (Subjects Specific & Well-being)

Art

<https://designmuseum.org/discover-design>

<http://www.impressions-gallery.com>

<http://www.saatchi-gallery.co.uk/schools>

[http://www.britishmuseum.org/learning/schools and teachers.aspx](http://www.britishmuseum.org/learning/schools_and_teachers.aspx)

<http://www.nationalgallery.org.uk/learning/teachers-and-schools/secondary-schools/>

<https://www.tate.org.uk/>

Business

<https://www.bbc.co.uk/bitesize/examspecs/zbqrgwx>

<https://www.businessed.co.uk/>

Computing & Computer Science

<https://www.bbc.co.uk/bitesize/subjects/z8mtsbk>

<https://www.bbc.co.uk/bitesize/examspecs/zmtchbk>

<https://compsci.homelearning.outwood.com/>

<https://www.youtube.com/.../UC0HzEBLIJxlrwBAHJ5S9J.../playlists...>

History

<https://www.gcsepod.com/>

PE

<https://www.ocr.org.uk/qualifications/cambridge-nationals/sport-studies-level-1-2-j803-j813/>

Technology

<https://www.bbc.co.uk/bitesize/examspecs/zby2bdm>

Mental Health & Well-being

<https://student.kooth.com/>

<https://staugs.thesharpsystem.com/>

<https://www.staugs.org.uk/well-being>

<https://hubofhope.co.uk>